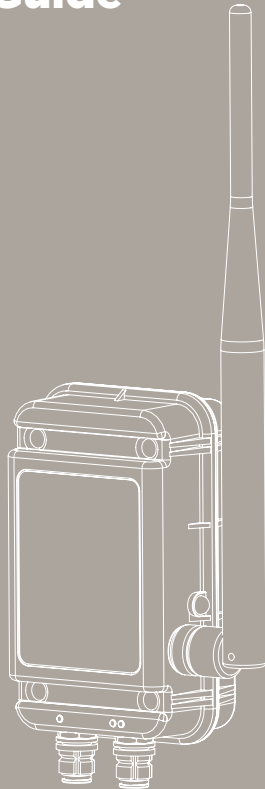
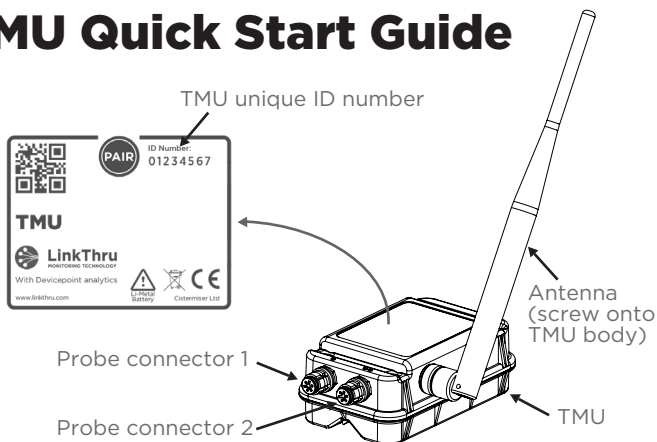


LinkThru
MONITORING TECHNOLOGY

TMU Quick Start Guide



TMU Quick Start Guide

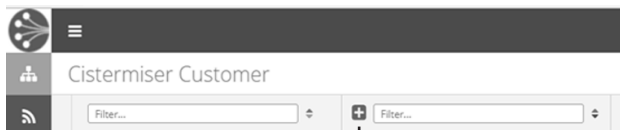


Create the building hierarchy and device point:

Your LinkThru portal is pre-loaded with TMU device ID numbers matching the physical hardware items you have purchased. But before you can attach the TMUs and start monitoring at your selected sentinel points, you must create a virtual building hierarchy on the platform that mirrors your water risk assessment schematic at:

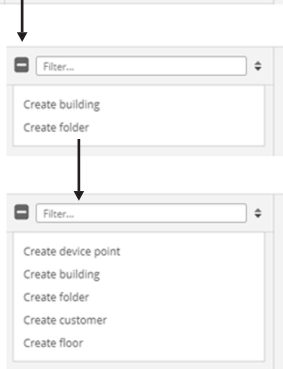


<https://linkthru.gemex-engine.com>



The “folder” option should be used to create floors or identifiable areas. Clicking on the green + button under “folder” opens more flexible options for hierarchy creation:

- Customer - Can only be created at the top level of a hierarchy.
- Folder - Can be created at any level of a hierarchy.
- Building - Can only be created within a Customer or Folder item.
- Floor - Can be created within a Building or Folder item.
- Device point - Can only be created within a Building, Folder or Floor item.

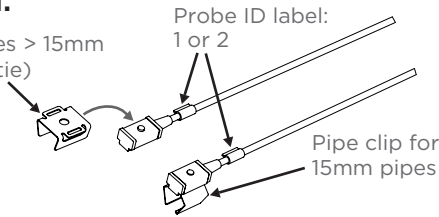


A Device point must be created for every TMU sentinel point you wish to establish. You can select from a full range of water system devices: Calorifier, Cold water tank, Incoming mains, Internal pipework, Riser cupboard, Shower, TMV Wash hand basin, Wash hand basin.

Whichever Device point type you select will set the data analysis parameters and alarm status applicable for that water system device. These default settings are based on HSE guidelines.

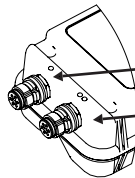
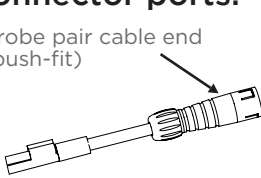
Fit the correct pipe clips to suit your installation:

Pipe clip for pipes > 15mm
(use with cable-tie)



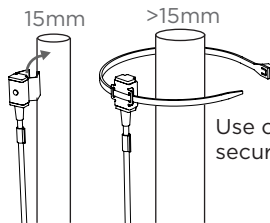
Attach each pair of probes to the TMU connector ports:

Probe pair cable end
(push-fit)



Attach probes to pipework:

- Cut back any insulation
- Ensure pipe is clean
- Securely fit probe to pipe
- Re-fit insulation over probe

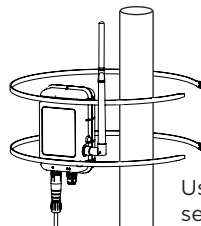


Use cable-tie to secure to pipe

NOTE! For accurate readings attach to copper pipe

Affix the TMU:

The TMU can be mounted on a pipe with the large cable-ties (supplied) or on a flat surface with the double-sided foam tape (supplied):



Use cable-tie to secure to pipe

Attach probes to LinkThru:

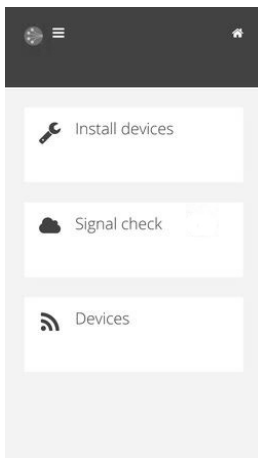
The installation app will aid the process of assigning devices to specific device points. Access the installation app using a web browser on your mobile or tablet via the following url:

<http://linkthru.gemex-engine.com/dp/hw-install>



Then follow these steps:

1. Login with your username & password
2. Select Install devices
3. Navigate your building hierarchy and select the device point location
4. Select the device point to show options for attaching the probes
5. Select the appropriate option for the pipe and attach
6. Enter the TMU unique ID number (found on front of unit)
7. Select the relevant probe (1.1, 1.2, 2.1 or 2.2) as physically attached to the TMU via the connector ports



For further information, please consult our range of “How To...” user guides which are available for viewing or download at:

www.linkthru.com



Cistermiser Limited
Unit 1, Woodley Park Estate, 59-69 Reading Road,
Woodley, Reading, Berkshire RG5 3AN
t: +44 (0) 118 969 1611
e: info@linkthru.com www.ourworldiswater.co.uk

Cistermiser is a subsidiary of Davidson Holdings Ltd.

TMU/20 Rev2