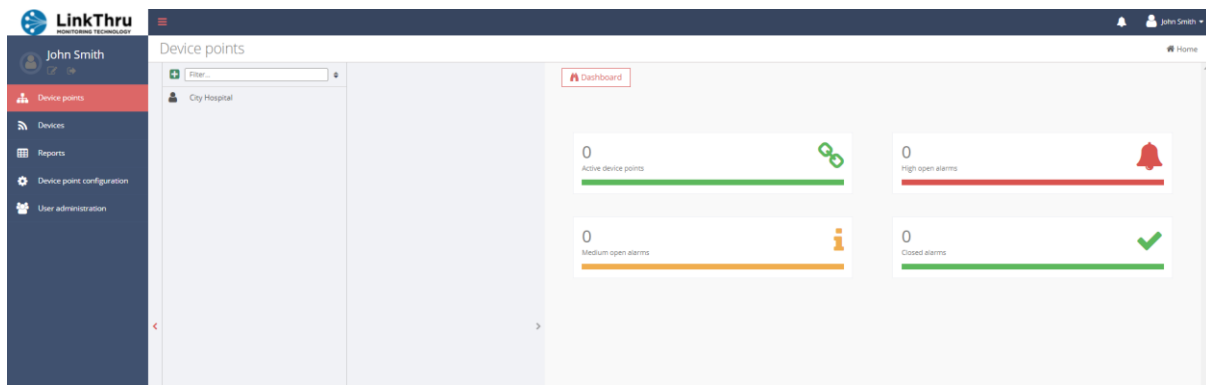


HOW TO... CREATE A HIERARCHY

Before you can create device points and attached devices you must create a hierarchy that represents the building(s) you are monitoring.

When you first start using LinkThru the hierarchy will only show your top-level Building or Organisation name.

Click on the Device points icon in the side bar menu to see the hierarchy:



Click on your top level Building or Customer to display a new window to the right and then using the + icon add buildings, floors and folders to help manage and keep track of your device points.

Customer - can only be created at the top level of the hierarchy.

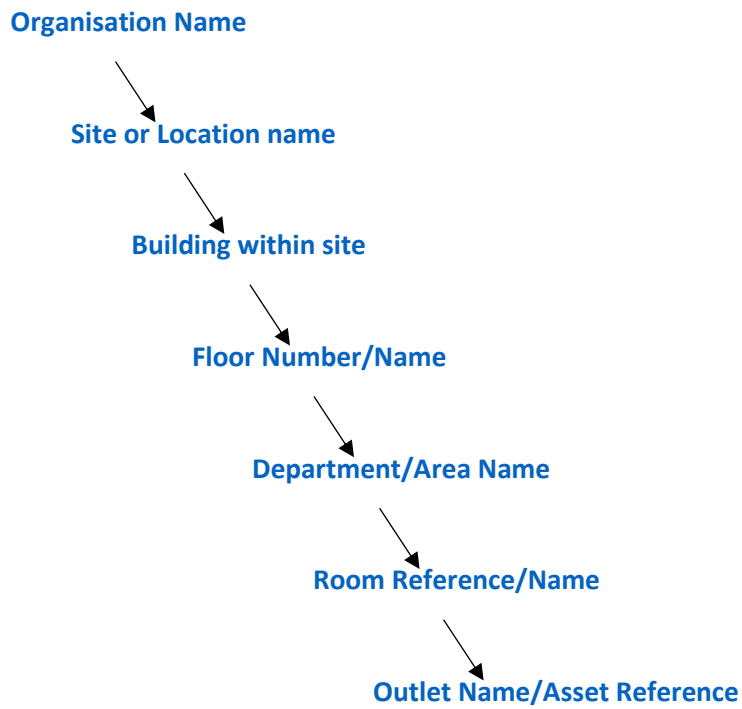
Building - can only be created within a customer or folder item.

Folder - can be created at any level of hierarchy. This is useful for grouping similar related device points that you may later want to perform extra analysis on. You can also set time zones at a folder level.

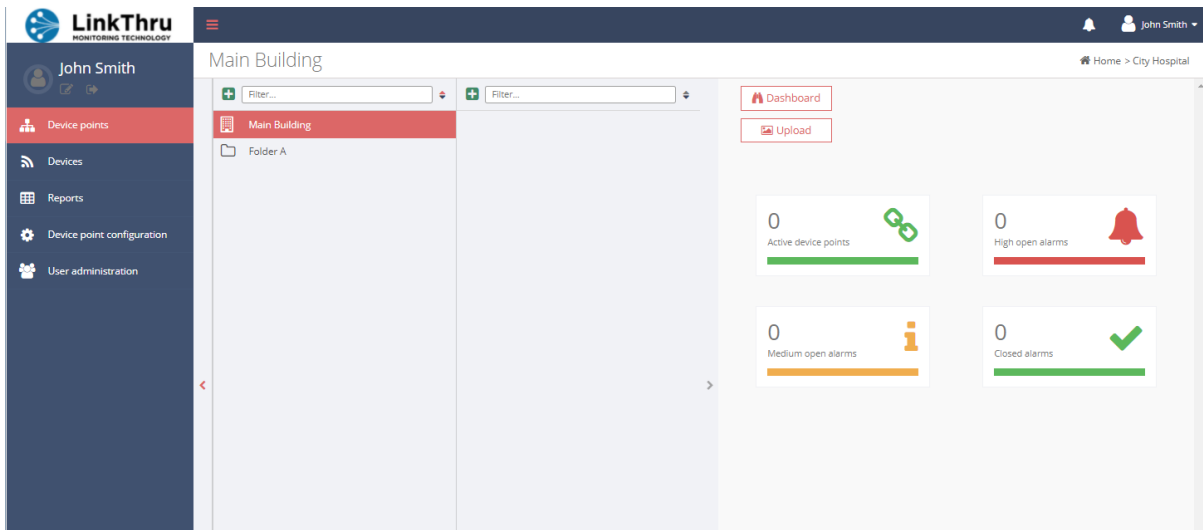
Floor - can be created within a building or a folder, this type of item is used for tab navigation on the diagram view.

Device point - can only be created within building, floor or folder. Each type of device point has its own custom set of analysis charts and it is possible to set alarms against individual device points.

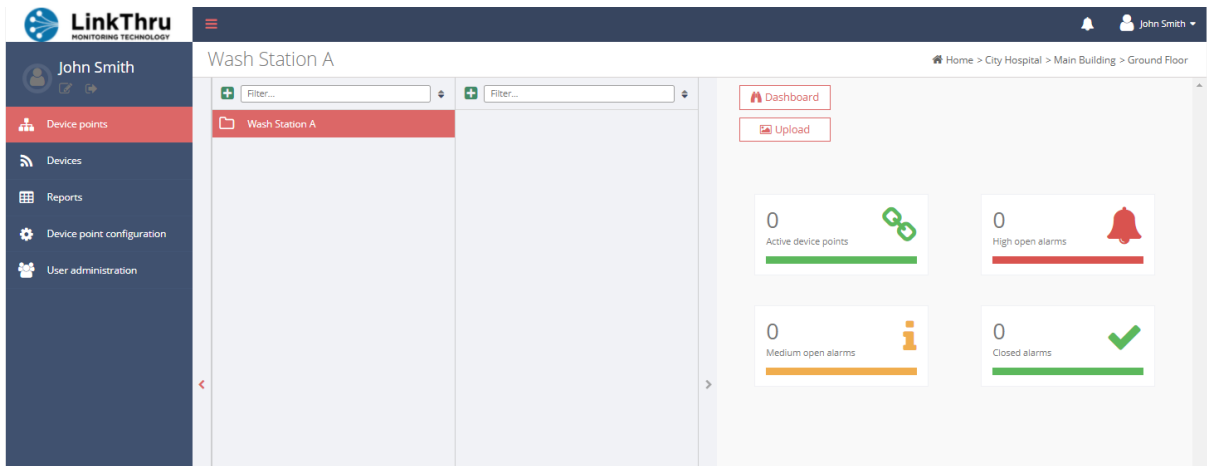
Example hierarchy flow for a large organisation:



Continue to build your hierarchy to represent your areas to monitor. In this example, Main Building has been added:



Now a Ground Floor has been added and a folder called Wash Station A. You can see the full hierarchy path on the top right of the window:



Now a **device point** must be created where the physical device can be attached. Click on + and create the device point.

A device point represents a real-world item or location that we will monitor and analyse, for example a TMV outlet within a water system.

Use a meaningful name or asset reference for the item, select the appropriate type and add in any additional contextual information that may be helpful to other users:

Create new device point
✕

Device point name *

Type *

Asset ID

Here the **device point** has been called Wash Hand Basin A1 and the **device point type** has been selected as TMV Wash hand basin. This will set the data analysis and notification alarm applicable for monitoring a thermostatic mixing valve, these can be amended to suit the specific risk assessment of the individual outlet or area.

The hierarchy has now been created for this specific device point.

Repeat these steps to create a structure that reflects your monitoring and reporting needs for all your devices.